

■ GEBERIT

Twyford

# EVERYTHING HEALTHCARE

**KNOW  
HOW  
INSTALLED**





# GEBERIT AND TWYFORD THE FIRST CHOICE FOR HEALTHCARE

AT GEBERIT AND TWYFORD, WE HAVE A UNIQUE KNOWLEDGE AND UNDERSTANDING OF THE HEALTHCARE SECTOR, WITH THE CAPABILITY TO PROVIDE SPECIFIC SOLUTIONS FOR HEALTHCARE ENVIRONMENTS. OUR COMBINED SECTOR EXPERIENCE MAKES US UNIQUELY EQUIPPED TO PROVIDE THE PERFECT ALL-ROUND PIPING AND SANITARY SOLUTION, WITH THE LATEST WATER EFFICIENT, RESILIENT AND EASY-TO-INSTALL PRODUCTS AVAILABLE FROM ONE RELIABLE SOURCE. WHEREVER SAFETY, ECONOMY AND SUSTAINABILITY ARE OF PARAMOUNT IMPORTANCE, WE PROVIDE COMPLETE PEACE OF MIND AND SAFE, FULLY COMPLIANT SOLUTIONS TO MEET EVERY HEALTHCARE NEED.

## Twyford

Part of the Geberit group since 2015, Twyford has been leading the way in washroom and toilet innovation for over 160 years. Besides continually moving washroom design forward with clever technology, smart design features and pioneering products like the Avalon and Sola rimless toilets, we're also committed to delivering lasting quality with 25 year guarantees on all ceramic products. Whatever the budget or application requirement, Twyford is the respected brand specifiers and installation professionals trust to deliver exceptional, long-lasting, water-efficient solutions.

## ■ GEBERIT

At Geberit, we use our passion for design and function to deliver reliable, high quality products that transform efficiency, increase safety and enhance educational environments. As a European market leader in sanitary innovation, we apply our vast know-how and over 150 years of experience to providing intelligent, fully integrated solutions. Besides featuring state-of-the-art system functionality, our piping and drainage products also deliver on hydraulics, fire protection, sound insulation and environmental properties, making us the partner of choice wherever sustainable solutions are required.

# OVER 150 YEARS OF INNOVATION

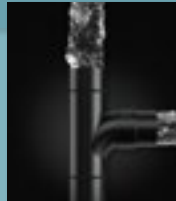
**1849**

Thomas Twyford founded the sanitaryware company.



**1956**

Geberit begins production of drainage technology.



**1989**

Fresh water supply systems are added to the Geberit product portfolio.



**2002**

Twyford introduce Total Install®. Geberit training centre opens in Kent.



**2011**

The Geberit AquaClean initiative is launched in the UK.



**2016**

Geberit ranked in the top 100 most innovative companies by Forbes.



**1909**

First cisterns produced in Switzerland leave the production plant in Rapperswil.

**1977**  
Launch of Geberit installation systems and shower toilets in Europe.



**2007**

Geberit sale of Terrain and Geberit Sales Ltd is formed. Twyford introduce Flushwise® and Rimfree®.



**2014**

50th anniversary of the Geberit concealed cistern.



**1883**

Thomas William Twyford invents the Unitas, the first all ceramic free standing pedestal closet.



**1921**

The first patent for the "Phoenix" wooden cistern is registered.



**1964**

Geberit launch their first concealed cistern.



**1980**

Twyford introduces coloured bathroom suites.



**2004**

Geberit acquires Mapress Holding GmbH in Langenfeld (DE).



**2009**

UK Head Office and Training Academy opens in Warwick.



**2015**

Geberit acquires Sanitec and the Twyford brand.



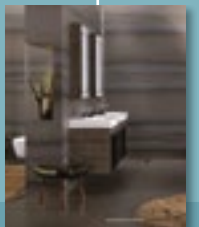
**2012**

Geberit Sigma80 touchless flush plate is launched. Geberit installed in the 2012 Olympic Aquatic Centre, London.



**2017**

Launch of the Geberit Bathroom Collection. The new Warwick Showroom opens.



# WHY CHOOSE GEBERIT AND TWYFORD FOR YOUR NEXT HEALTHCARE PROJECT?

With so much at stake, why take risks? Specify Geberit and Twyford every time - for complete compliance and total peace of mind.

The healthcare sector is one of the most challenging environments facing any specifying professional. It's a sector where issues of hygiene, flexibility and regulatory compliance are as important as product quality and durability.

Geberit's healthcare range has been specifically designed following extensive research into the needs of healthcare managers and specifying professionals. It combines innovation with the highest levels of practicality and attention to detail - enabling specifiers to completely satisfy sanitaryware requirements and regulations, across all areas of the healthcare market.

## OUR VALUES

### OUR COMMITMENT TO YOU



#### KNOW-HOW

We use our experience and technical expertise to create solutions that make a real and lasting difference, delivering advanced training through our worldwide academies.



#### INNOVATION

Every new development is based on solid research and the latest innovations. The quality of our R & D ensures that we stay ahead in sanitary technology.



#### PARTNERSHIP

Our customers are the focus of everything we do. We build better relationships by working together to discover more effective solutions.



#### RELIABILITY

We aim to create durable solutions by simplifying the complex and ensuring the safety and dependability of our products and systems throughout their lifecycles.



#### QUALITY OF LIFE

Our intuitive products enhance modern living, by setting new standards in design and functionality. Our focus on water economy is part of our long-term contribution to the environment and society.

# CONSISTENTLY COMPLIANT

## THE TMV SCHEME



The TMV3 Scheme is the third party valve accreditation programme which is administered by NSF. It has been set up to test independently whether valves submitted are suitable for use in high risk commercial healthcare applications within the UK. The performance testing required in order to comply is based on the NHS model engineering specification D08 for thermostatic mixing valves. Other important factors are also considered: for instance, an applying company must also prove that they comply with ISO 9001 or a suitable equivalent quality control system, the valves are checked for correct marking so they can be identified in the field, packaging and instructions are checked to make sure they conform to guidelines issued by Buildcert.

The TMV2 Scheme is very similar to the TMV3 version but with one big difference: where the TMV3 scheme is intended to be used to certify valves for use in the high risk healthcare sector, TMV2 valves are specifically designed, built and tested for the domestic market.

## BREEAM



Building Research Establishment Environmental Assessment Method (BREEAM) is a sustainability assessment method that is used to masterplan projects, infrastructure and buildings. Launched in 1990, by the Building Research Establishment (BRE) it sets standards for the environmental

performance of buildings through the design, specification, construction and operation phases and can be applied to new developments or refurbishment schemes. BREEAM assessment evaluates the procurement, design, construction and operation of a development against a range of targets based on performance benchmarks across range of categories including; energy, water, pollution, transport and waste. Each category focusses on the most influential factors, including reduced carbon emissions, low impact design, adaption to climate change, ecological value and biodiversity protection.

## WRAS



The Water Regulations Advisory Scheme (WRAS) exists to protect public water supplies from contamination and to encourage the use of water efficiency. Any installed water fitting that will come into contact with mains public water, must comply with WRAS water regulations. WRAS approval is the easiest way to demonstrate compliance, because it is granted directly through representatives of the WRAS Scheme. Whole products, such as taps, showers and valves undertake mechanical and water quality testing. The approval granted following this testing demonstrates full compliance with the WRAS Scheme. Non-metallic materials, such as rubber seals, only undertake testing for their effects on water quality. The test demonstrates that a particular material does not contaminate the water.

## HEALTH TECHNICAL MEMORANDUM (HTM)

Health Technical Memorandum (HTM) 04-01 is made up of three parts: Part A outlines the principles involved in the design, installation and testing of the hot and cold water supply, storage and distribution systems for healthcare premises. Part B provides guidance for operational management. Part C gives considerations for water safety in augmented care environments. There is also a supplement to this HTM called D08, which provides additional considerations for thermostatic mixing valves. This document identifies methodologies to control and minimise the risk of pseudomonas bacteria in relation to water outlets.

## HEALTH BUILDING NOTE (HBN)

Health Building Notes give "best practice" guidance on the design and planning of new healthcare buildings and on the adaptation/extension of existing facilities. They provide information to support the briefing and design processes for individual projects in the NHS building programme.

HBN 00-10 Part C outlines requirements for sanitary items within healthcare environments. There is flexibility built into this HBN, as it allows choice in the materials and methods for construction, as long as they conform to the specifications within the document.

# WATER SAVING AND INNOVATION



A toilet that has no rim meaning there is nowhere for germs to hide and making it easier to clean.



Twyford's water saving dual flush 4/2.6 litre cistern system.



Our unique Total Install® system makes installation of toilets and bathroom fittings quicker and simpler than ever before. Giving a perfect and professional finish to every job.



The European Water Label (EWL) is designed to help easily identify water efficient products, which when installed and used correctly will use less water and save energy and money, compared to other products available in the market. Please visit the European Water Label website: [www.europeanwaterlabel.eu](http://www.europeanwaterlabel.eu) for more information.

## PRODUCTS FOR EVERY AREA

Throughout this booklet you will find the icons below, these can help you see which products are used in which areas of a hospital.



TOILET



LABORATORY



KITCHEN (INCLUDING STAFF ROOM)



LESS ABLED (INC ENSUITE)



WARD



CORRIDORS



CLEANERS ROOM



SURGICAL SCRUB



# TWYFORD WEBSITE

[www.twyfordbathrooms.com](http://www.twyfordbathrooms.com)

The Twyford website has a dedicated area for industry professionals, including the innovative SpecMaster online product specification tool [www.specmasteronline.com](http://www.specmasteronline.com) for use by architects, designers, specifiers and contractors.

A central download area [www.twyfordbathrooms.com/professionals-area/downloads](http://www.twyfordbathrooms.com/professionals-area/downloads) allows users to access and download Twyford technical files including:

- Product sheets (these are the pages in this document)
- Technical drawings
- 2D Files
- 3D Files
- Certificates (approvals)
- BIM Files

Multiple filters are also available to further refine downloads.

Twyford Professionals area also includes links to information on DOP and CE Marking and lists key strategic partners.



# SPECMASTER ONLINE

Register today for FREE at  
[www.specmasteronline.com](http://www.specmasteronline.com)

SpecMaster  
powered by **NBS**

## The ultimate online sanitaryware specification tool

Design and innovation are key to Twyford Bathrooms in enabling the company to meet the evolving demands of its customers and the wider market.

As a leading global bathroom manufacturer, Twyford, Part of the Geberit Group, continues to invest a significant level of resources in research and development, and this venture is a collaborative partnership with the National Building Specification (NBS), part of RIBA Enterprises. Together we have created SpecMaster, an online specification tool for architects, designers, specifiers and contractors.

## Summary of key features and benefits:

- An intuitive and user-friendly tool that allows users to create and manage projects online with no software installation required
- Free registration [www.specmasteronline.com](http://www.specmasteronline.com)
- Opportunity to share projects with colleagues securely from any internet access point
- Improved browsing and search functionality that enables accurate product choices as well as complete and compatible specifications
- Easy access to Twyford and Geberit Ceramics product portfolio, backed and powered by NBS
- Opportunity to produce and download essential specification documents and material
- Compatible with NBS standards



# GEBERIT ONLINE PRODUCT CATALOGUE

The Geberit website hosts the online product catalogue ensuring that specifying products from the complete Geberit range is easier than ever.

The catalogue sees the addition of Geberit bathroom ceramics, furniture & mirrors to the online platform, offering a one-stop shop for all things Geberit including Geberit AquaClean, Duofix frames, cisterns, flush plates, supply and drainage systems. Enabling any specifier to satisfy sanitaryware requirements and regulations, across all areas of the healthcare market.

**The online catalogue is divided into clear and easy to navigate sections, including:**

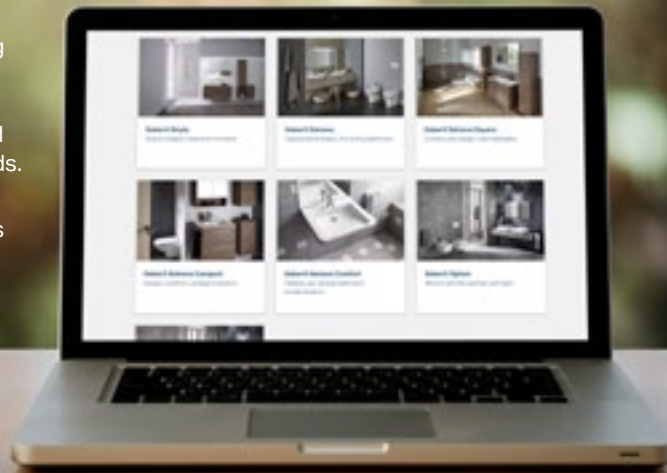
- Bathroom Systems
- Installation and Flushing Systems
- Supply Systems
- Drainage Systems
- Tools
- New releases
- Bathroom Series

Available to view at [www.geberit.co.uk/catalogue](http://www.geberit.co.uk/catalogue) this new, user-friendly platform is packed with additional benefits, including enhanced personalisation features and a download facility for product images, CAD drawings and specification sheets.

## PROJECT LISTS & DOWNLOADS

Geberit also give users more control over healthcare project specifications, with the log in feature allowing users to create and save project lists, meaning they can download a raft of information in the form of personalised catalogues, CSV files and bulk CAD downloads.

Accessible on any device, the new platform allows you to navigate the myriad of products faster from mobile phones, tablets or desktops.



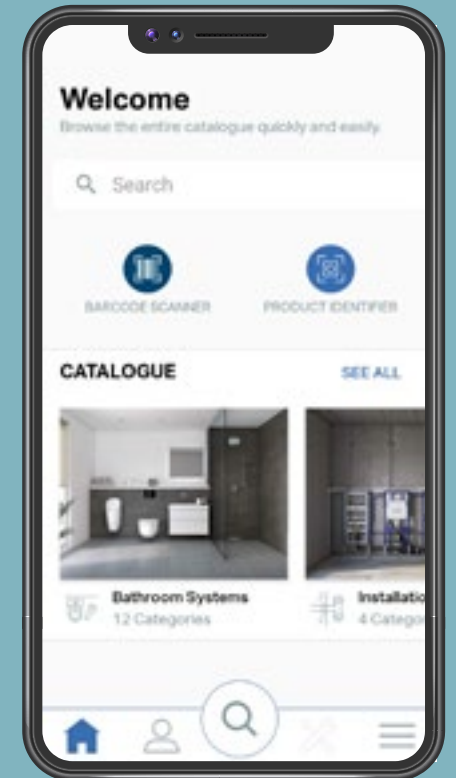
# GEBERIT PROAPP

KNOW HOW AT YOUR FINGERTIPS

**KNOW  
HOW  
INSTALLED**

The Geberit ProApp is really easy to navigate. Simply download it and you will see a quick tutorial of all the features you can benefit from.

- Identify all Geberit products by simply scanning its barcode
- Enjoy immediate access to the Geberit product range, technical drawings and easy to follow installation videos
- The Geberit ProApp also enables you to identify this new, user-friendly platform is packed with additional benefits, including enhanced personalisation features and a download facility for product images, CAD drawings and specification sheets.



## DOWNLOAD FROM THE APP STORE OR GOOGLE PLAY

Scan the QR code



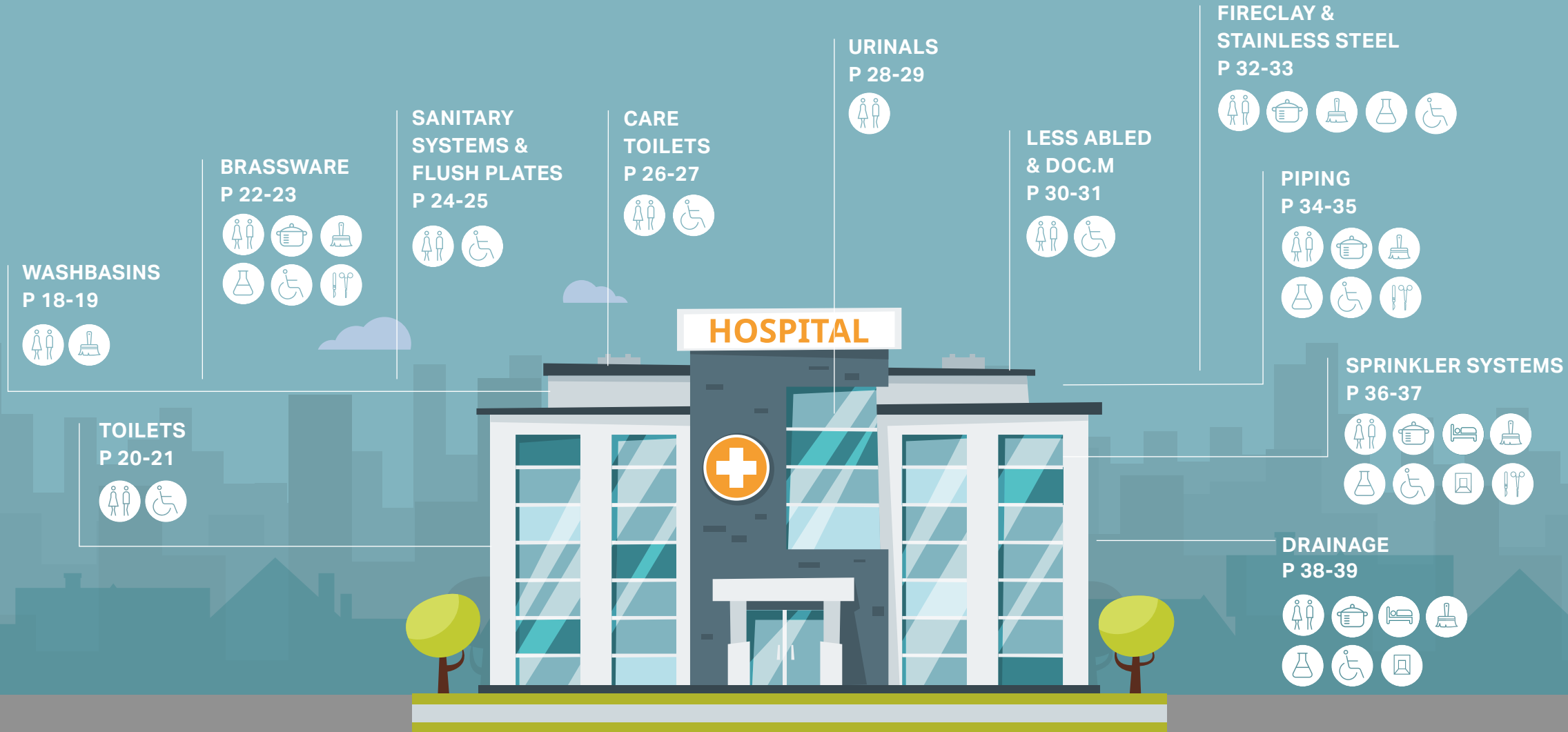
App Store



Play Store

# PERFECT SOLUTIONS FOR EVERY HEALTHCARE SPACE

Our supply and drainage pipes are the veins of any hospital, reliably supporting and maintaining every aspect of life in healthcare and care homes. Together, Geberit and Twyford can provide innovative, fully integrated solutions which keep everything running smoothly, efficiently and economically, every day.





# PROVEN PERFORMANCE IN HEALTHCARE ENVIRONMENTS



## ST. VINCENT'S CENTRE, LONDON

### Project Overview

#### Transforming lives with uplifting environments

Prior to the redevelopment, the washrooms in St Vincent's were very dated and tired and were typically subjected to a lot of graffiti and abuse as they were the one place in the centre without CCTV cameras.

The internal structure and layout has been radically changed and in the bathrooms, which include attractive WC laminate back panels incorporating scenes from London parks, Geberit Duofix frames and Sigma concealed cisterns, combined with Sigma10 stainless steel flush plates have been installed, providing a solution that is robust and complementary to the design.

### Why Geberit?

Geberit's products perfectly matched the requirements of St Vincents, providing a durable and safe solution. We rigorously tested the flushplates, frames and cisterns prior to specification to check they could meet the high volumes and variety of users at the centre. Stylistically, the Geberit Sigma10 flushplates are simple and clean-lined and have a feeling of quality. It was important that clients at St Vincents Centre felt that the products specified for them were not compromised on quality as we firmly believe that being in an attractive environment which performs well and feels comfortable inspires and promotes progress.

"We were delighted to welcome HRH the Duke of Cambridge to The Passage to launch St. Vincent's Centre. The Duke is clearly committed to the work of ending homelessness and indeed visited St. Vincent's Centre many years ago with Princess Diana and Prince Harry, to see our work at first hand. It was therefore wonderful to show the Duke the changes we have made to the building, for him to be able to meet those who use, volunteer and work at our services and to then formally launch the refurbished building."

Mick Clarke, The Passage CEO



## ABERDEEN ROYAL INFIRMARY, ABERDEEN

### Project Overview

The strategic objectives of the custom-built centre are to provide flexibility for a redesigned emergency care pathway between community health partnership services and the acute hospital.

Offering the complete package of ease of installation, innovation and discreteness which is so important in the health care industry. With the project worth a total of £91 million, more than a quarter of a million pounds worth of Geberit products have been used in the new build project, including more than 50 miles of Geberit pipework.

### Why Geberit?

With energy efficient design and materials being key to the sustainability of the new construction, Geberit HDPE is particularly suited to this development as it is a simple compound of carbon and hydrogen atoms, which consumes less energy during manufacture and transport than steel, cast iron or copper pipes.

More than £100,000 worth of Geberit Mapress Stainless Steel pipework has also been used on this project, and the press fitting system will not only help to reduce maintenance issues but is also far more easy to install than conventional methods.

**Helping tackle the issue of noise control is Geberit's Silent-db20 drainage system, whilst more than 400 Geberit Duofix wall-hung framing systems have been used in the public and private washrooms of the new Emergency Care Centre as a hygienic, easy to clean solution.**



# MULTIPLE CHOICE SOLUTIONS FOR WASHBASINS

THE TWYFORD AND GEBERIT WASHBASIN RANGE IS FULLY COMPLIANT TO ALL REGULATIONS. WE OFFER THE COMPLETE SOLUTION - IN TERMS OF PRODUCT DESIGN, QUALITY, INSTALLATION AND MAINTENANCE.



Twyford Sola medical washbasin

NOT JUST ADAPTABLE, BUT AFFORDABLE TOO.

Twyford Sola basins have deeper side walls for superior strength and longevity. Enclosed fixings offer greater hygiene while our semi-recessed basins feature short projections, placing everything within easy reach.



Twyford Sola medical washbasin

THE GEBERIT SELNOVA COMFORT WASHBASIN RANGE HAS BEEN DESIGNED TO ENABLE FULL ACCESS FOR WHEELCHAIR USERS.



Geberit Selnova Comfort



# TAKING TOILETS TO A MORE ADVANCED LEVEL

IN CUBICLE AFTER CUBICLE, TWYFORD AND GEBERIT IS THE TOILET SOLUTION OF CHOICE FOR HEALTHCARE SPECIFIERS, WITH SUPER-ECONOMICAL FLUSHWISE® TECHNOLOGY USING UP TO 60% LESS WATER.

TWYFORD SOLA. SO FLEXIBLE. SO HYGIENIC.

Twyford Avalon, Sola and Geberit Selnova Comfort are the flexible installation solutions with back-to-wall, wall-hung or close coupled options including the revolutionary rimless toilet technology making maintaining hygiene effortless. Flushing effectively on 4 litres to meet BREEAM specifications, Twyford Avalon, Sola and Geberit Selnova are economically sound and ecologically friendly.



## MAKING HOSPITALS TOTALLY ACCESSIBLE

With Twyford Doc.M rimless packs, robust grab rails, raised height toilets, long projection toilets and accessible washbasins, if there's anything we can do to help, you'll find it in our range.



Geberit Selnova Comfort extended projection pan



# TAPS THAT TICK EVERY WASHROOM BOX

TAPS IN HEALTHCARE ENVIRONMENTS HAVE TO COPE WITH A WIDE VARIETY OF CHALLENGES. OUR COMPREHENSIVE RANGE COVERS EVERY WATER-SAVING, TEMPERATURE-CONTROLLED, FLOW-RESTRICTED, BREEAM COMPLIANT AND SAFETY OPTION YOU NEED.

## SMARTER TAP SOLUTIONS FOR STAFF AND GUESTS

These taps and mixers meet every contemporary washroom or bathroom need, combining affordability with advanced technology and WRAS approved materials.



Twyford Lever action mixer



Twyford TMV3 basin mixer with detachable spout

## THE TWYFORD SOLA SURGEONS TAP

Incorporating leading edge insulation technology to ensure that the whole tap body stays cool and comfortable to the touch - no matter how hot the water runs. Another smarter and safer brassware solution, developed and designed specifically for the healthcare sector by Geberit.



Twyford Wall mounted surgeons mixer with detachable spout





# IN FRONT FOR BEHIND THE WALL FRAME TECHNOLOGY

In any healthcare environment, hygiene, flexibility and all-round usability are of paramount importance. With Geberit Duofix behind-the-wall frame technology and Twyford wall-hung sanitaryware, every eventuality has been considered. Having pipework and cisterns neatly concealed behind the wall not only saves space, but cleaning and maintenance time too. While the versatility of Geberit Duofix frames enables wall-hung WCs to be easily installed in a variety of situations including under a window, in narrow wall ducts or under a sloping ceiling. There is also an adjustable version which enables a seat height of up to 49cm to suit the individual needs of the user.

- Frames in various heights, depths and functionalities
- Frames for toilets, washbasins, urinals and Geberit electronic tap systems
- Geberit Duofix toilet frame is tested to withstand 400kg of weight
- Easy installation with only four fixing points
- Pre-wall fixing brackets with adjustable 90° drainage bend included
- Spare parts availability guaranteed for 25 years

GEBERIT DUOFIX  
DELTA FRAME



**KNOW  
HOW  
INSTALLED**



# FLUSHING TECHNOLOGY WITH SECURITY BUILT IN

Our flush plates are the definitive finishing touch for any washroom, combining a streamlined design aesthetic with innovative manual or electronic actuation. The combination of vandal proof stainless steel designs, touchless infra-red and the latest tamper proof features, ensure that they keep their effortlessly stylish looks for longer.



Geberit Delta21



Geberit Kappa21



Geberit Sigma20



Geberit Delta21



Geberit Kappa50



Geberit Sigma80

To explore the full collection, please go to [www.geberit.co.uk](http://www.geberit.co.uk)





# GEBERIT CARES

GEBERIT AQUACLEAN MERA CARE.

INNOVATIVE THINKING FOR INDEPENDENT LIVING

WE ARE COMMITTED TO THE HIGHEST POSSIBLE STANDARDS IN INDEPENDENT CARE.

Geberit cares about innovation in independent living. By understanding the OT's and end user requirements we are able to offer an unrivalled package that will make you feel confident you are choosing the right product.

- Designed with aesthetics and function at its core
- Designed and adapted specifically for the needs of the care market
- Specialist sales team who understand the market
- We understand that the budget is important
- Easy personalised settings - no need for an engineer to be called out
- 3 year guarantee and 25 year parts stocking guarantee for internal cistern working parts



Remote control



Geberit Mera Care shower toilet

THE GEBERIT AQUACLEAN MERA CARE SHOWER TOILET IS DESIGNED TO PUT THE USER IN CONTROL.

Our development team have been working on the Geberit AquaClean Mera Care design for independent living for several years, utilising the Geberit Group's experience and expertise. We are constantly evolving and enhancing every aspect of our care products and have installed a number of these units across the UK during the development phase to test their installation and use, and to seek feedback, so we were able to make any enhancements required.



Geberit Mera Care shower toilet



# OUR MOST COMPACT AND FLEXIBLE LINE UP YET

THE INTELLIGENT DESIGNS IN OUR URINAL RANGE PROVE THAT URINALS CAN BE MORE THAN MERELY FUNCTIONAL. PROVIDING REASSURINGLY HYGIENIC SOLUTIONS FOR ANY ENVIRONMENT, THEIR COMPACT DIMENSIONS OPEN UP ALL KINDS OF NEW DESIGN POSSIBILITIES.

TWYFORD CLIFTON, CAMDEN, SPECTRUM AND CENTAURUS. EVERY SOLUTION, FOR EVERY WASHROOM SPACE.

With concealed cisterns and waterless technology, odour-reducing intelligence and anti-vandal resilience, our Clifton, Camden, Spectrum and Centaurus urinal ranges provide you with smart and reassuringly dependable solutions for every washroom location.



Twyford Clifton Urinal



Twyford Centaurus Waterless Urinal



Twyford Camden Urinal



# PERFECTLY PLACED TO OFFER A MORE ACCESSIBLE SOLUTION

EVERY DAY, WE HELP LESS ABLED PEOPLE TO ENJOY MORE SAFETY, MORE COMFORT AND MORE INDEPENDENCE. WITH A CATEGORY-DEFINING RANGE OF TWYFORD DOC.M PACKS AND ROBUST SUPPORTS, EVERYTHING IS CAREFULLY THOUGHT OUT TO GUARANTEE EASIER ACCESS FOR THOSE WHO NEED IT MOST.

## MAKING LIFE MORE ACCESSIBLE .

With Doc.M rimless packs, robust grab rails, raised height toilets, long projection toilets and accessible washbasins, if there's anything we can do to help, you'll find it in our range.



Geberit Selnova Comfort raised height toilet



Twyford Doc.M back-to-wall rimless



Twyford Doc.M shower pack



Twyford Doc. M. rimless super pack

# THE INNOVATION GOES ON AND ON

WE UNDERSTAND THAT MANY HEALTHCARE APPLICATIONS INVOLVE HEAVY USE IN HIGH TRAFFIC AREAS. THAT'S WHY WE'RE THE EXPERTS WHEN IT COMES TO STAINLESS STEEL AND FIRECLAY PRODUCTS. OUR EASY-CLEAN, STAIN-RESISTANT SOLUTIONS OFFER PROVEN PERFORMANCE WHEN FACED WITH THE ROUGH AND TUMBLE OF EVERYDAY LIFE.

## PROVIDING HYGIENE ON THE GO

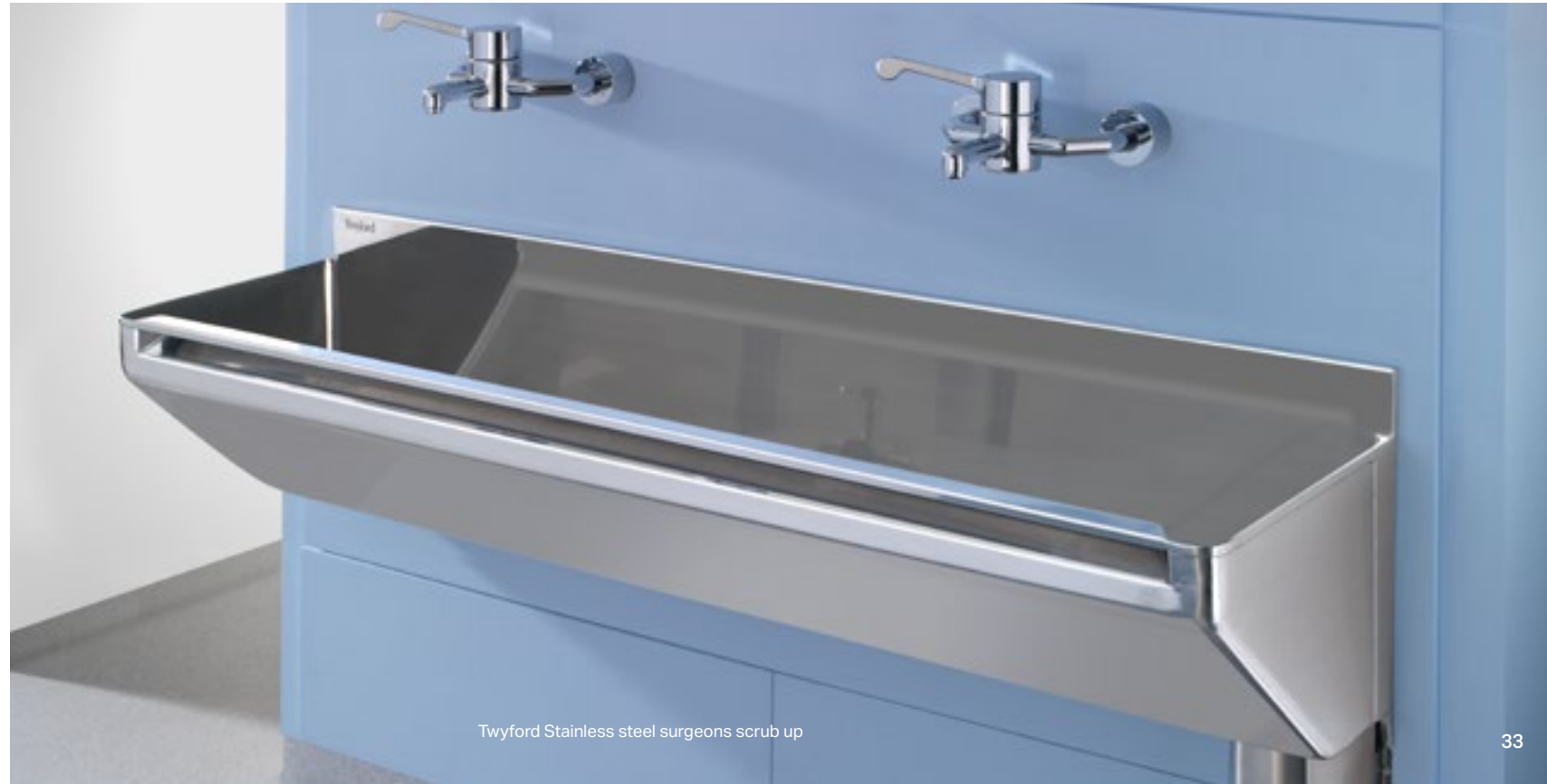
Our pioneering approach to washing troughs and cleaner's sinks makes environments safer, more accessible and infinitely more hygienic.



Twyford Cleaners sink



Twyford Circular washstation



Twyford Stainless steel surgeons scrub up



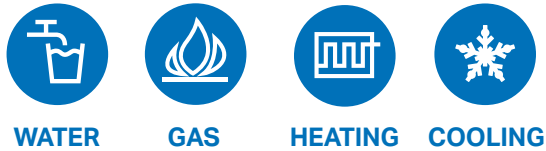


# RELIABLE CONNECTIONS THAT PASS EVERY TEST

WHEREVER RELIABILITY, SAFETY AND EASE OF INSTALLATION ARE KEY, GEBERIT SUPPLY SYSTEMS CAN PROVIDE A REASSURINGLY COST-EFFECTIVE ANSWER. WHETHER IT'S DRINKING WATER, HEATING OR GAS, GEBERIT CAN PROVIDE A DEPENDABLE SOLUTION.

## GEBERIT MAPRESS

Geberit Mapress is the press-fit system that can be put into action in any healthcare environment. With a wide range of materials and seal rings, it provides a specialist solution for all applications where speed, safety, flexibility and efficiency are of the highest priority. There are no hot works and no cooling down required, which dramatically cuts installation time and downtime, ensuring a safe, long-lasting connection every time.



## GEBERIT MEPLA

Geberit Mepla is the safe, simple, economic and hygienic multilayer pipe system, featuring a proven combination of PVDF, gunmetal and brass, making it the perfect system for potable water and heating applications in hospitals.

With a pipe made from three layers (an outer layer of PE-RT, aluminium core and an inner layer of PE-RT), processing is easy and flexible. This ensures a high degree of safety and reliably tight connections, whilst complying with the strictest hygiene standards.







# GEBERIT MAPRESS TECHNOLOGY MAKING INSTALLING SPRINKLERS SIMPLER

## THE PERCEIVED BARRIERS TO RETROFIT INSTALLATIONS

DESPITE THEIR CLEAR BENEFITS, RETROFIT SPRINKLER SYSTEM INSTALLATIONS IN TOWER BLOCKS AND PUBLIC BUILDINGS WERE RARE BEFORE THE GRENFELL TOWER FIRE BECAUSE THEY ARE COMMONLY SEEN AS COSTLY, DISRUPTIVE AND MORE OF AN INCONVENIENT UPGRADE THAN A VITAL SAFETY MEASURE. WHILST THESE PERCEIVED BARRIERS MAY BE TRUE FOR SOME OUTDATED SYSTEMS, IT IS NOT REPRESENTATIVE OF THE LATEST TECHNOLOGIES AVAILABLE TO CONTRACTORS.

Here are three of the most commonly perceived barriers and why, with the right education, they should not prevent vital installations - even in advance of any potential change in fire safety laws.

### → Hot works

**"We don't want open flames from soldering or welding, which can pose a risk of fire in itself during installation."**

This is a valid point with soldered or welded pipe systems, particularly in mission critical buildings or where safety is of extra concern, like hospitals, education or care homes. Press fit systems, however, do not require hot works, which makes them the perfect choice for retrofit installations – more on that overleaf.

### → Aesthetics

**"It's too costly and disruptive to conceal pipes for a retrofit sprinkler system – but we can't leave exposed pipes throughout the building?"**

Press fit systems are also less costly and less disruptive than you might think because they can be easily installed within removable ceilings, with no need for hot works. Another way in which they can facilitate retrofit installations.

### → Cost

**"We simply don't have the budget. There are other fire suppression methods available at a cheaper cost."**

A sprinkler system in a new building generally costs no more than 1-2 per cent of the total build cost and whilst retrofit sprinkler systems will inevitably be more costly, a fire sprinkler system can be installed at a lower cost as part of other renovation works.



**KNOW  
HOW  
INSTALLED**

LPCB - both stainless and carbon steel internal/external galvanized pipework are suitable and approved under LPCB guidelines

**PUT SIMPLY, THERE IS NO OTHER FIRE SUPPRESSION SYSTEM AS EFFECTIVE AS SPRINKLERS - NOBODY HAS EVER DIED FROM A FIRE IN THE UK IN A BUILDING WITH A WORKING SPRINKLER SYSTEM.**



# GEBERIT DRAINAGE SOLUTIONS



**Geberit HDPE** brings proven capability to waste disposal wherever system integrity is required. From extreme temperature changes and pressure shifts to aggressive media, it offers the ultimate professional solution for long term peace of mind.

HDPE is an increasingly popular material for drainage pipes and fittings in hospitals. One of the most versatile plastics, HDPE has been used for underground service pipes like water and gas since the 1960s and it is easy to see the advantage for hospitals. HDPE combines the light weight,

flexibility and installation benefits of plastic. It is resistant to around 95% of all standard alkalis, acids and chemicals. The pipes and fittings withstand shocks, drops, impacts or short-term pressure without breakage or permanent deformation.



**Geberit Silent-db20** is the versatile waste and drainage system that quietly gets on with the job for discharge stacks and floor connections. It combines effective sound insulation with a high discharge capacity and a leak-proof welded system.



**Geberit Pluvia** has revolutionised drainage from large roof areas. Come rain, shower or downpour, our siphonic roof drainage system uses negative pressure to deliver a discharge rate twice that of conventional systems, for maximum performance whilst minimising pipework.



**The Geberit fire protection sleeve RS90 Plus** prevents fire from spreading via the drainage system. Under the influence of heat, the material in the fire protection sleeve swells, completely compressing the discharge pipe and thereby preventing the fire from spreading to other floors or rooms.

**KNOW  
HOW  
INSTALLED**

**Geberit Sales Ltd**  
**Geberit House**  
**Edgehill Drive**  
**Warwick**  
**CV34 6NH**

**T 01926 516800**  
**E [enquiries@geberit.co.uk](mailto:enquiries@geberit.co.uk)**

**[twyfordbathrooms.com](http://twyfordbathrooms.com)**  
**[geberit.co.uk](http://geberit.co.uk)**